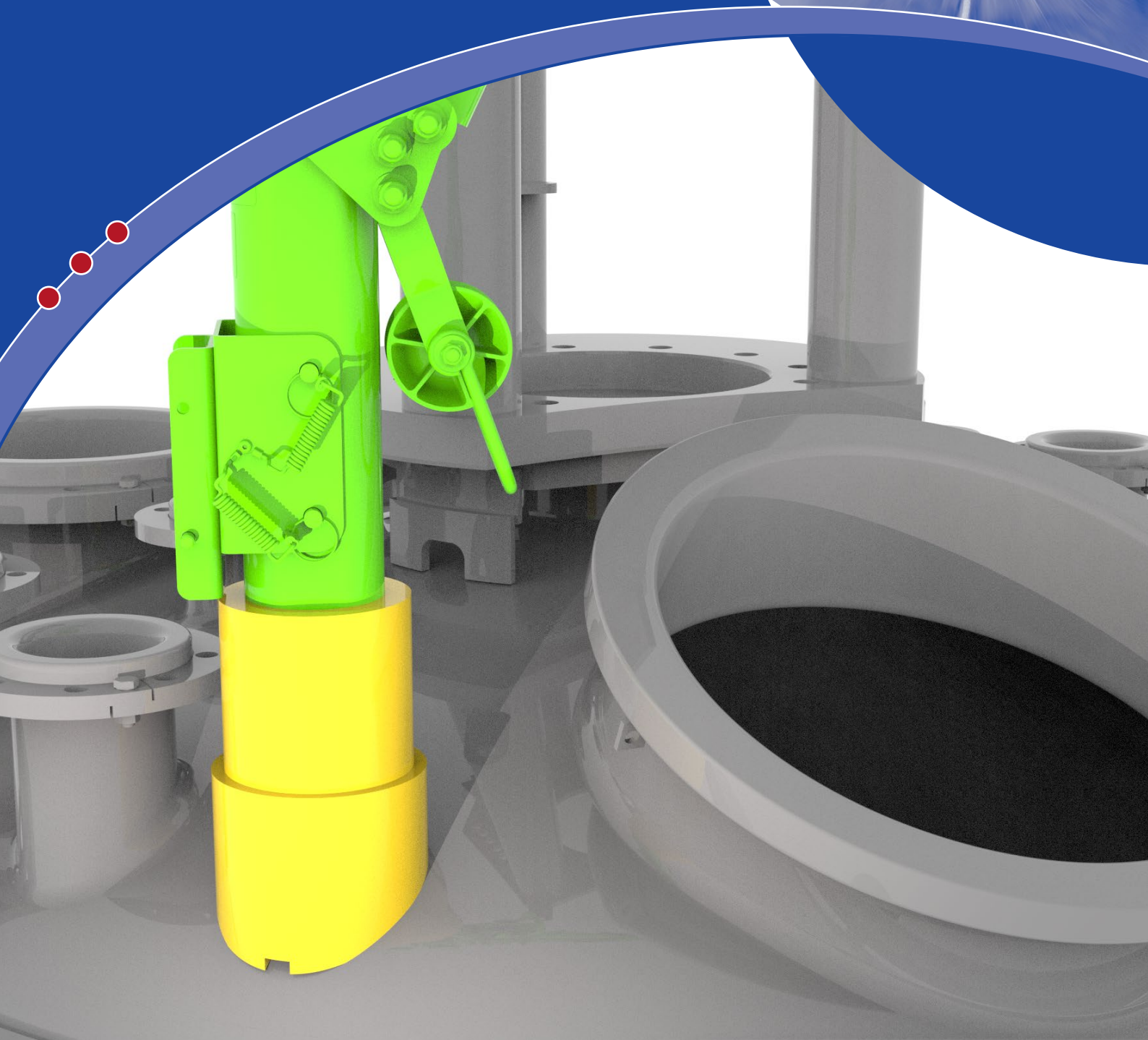


THALETEC SafeBase

Universal anchor point for
personnel safety and lifting
Systems on Glass-lined
Process Equipment

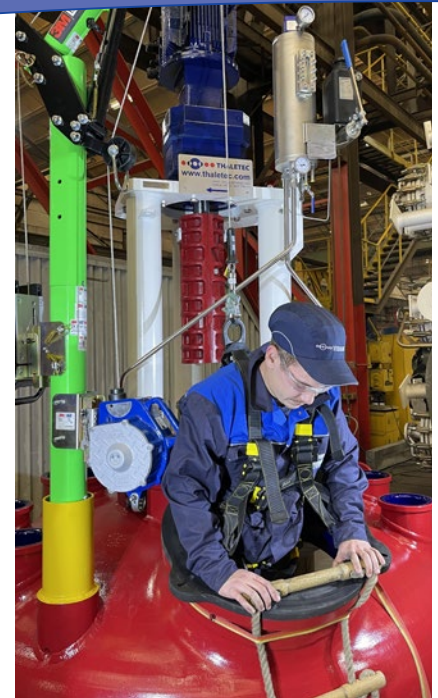




① 01 THALETEC SafeBase attachment point with insertion sleeve



② 02 Davit lifting system used as a hoist for inserting a glass-lined stirrer into a stirrer vessel.



③ 03 Davit hoist system, used as a personal safety and rescue system

Description

Working in confined spaces involves numerous risks. A variety of hazards, such as lack of oxygen, toxic or explosive atmospheres, and great heights create demanding working conditions.

Confined spaces offer few options for entry and exit, making rescue and other emergency response difficult. These often hazardous work environments are fully or partially enclosed and not designed for people to stay in for extended periods of time. A severely confined space can pose a health and safety risk to anyone who enters it.

For easy installation and mounting of the market-leading 3M™ DBI-SALA® Modular Davit Lifting System »HC« (small or large), THALETEC has now developed a standardized mounting base, the **THALETEC SafeBase**. It is manufactured in accordance with the relevant standards and requirements and can be mounted on the upper base near the manhole opening in the case of new apparatus to be manufactured or as part of a reglassing. The space requirement of a THALETEC SafeBase corresponds approximately to a DN 100 (4") vessel nozzle.

The concrete position of the mounting base is determined in coordination with the customer and depending on the container size and the spigot pattern on the upper bottom according to the order.

The 3M™ DBI-SALA® Modular Davit Lifting System »HC« is not only suitable for securing and, if necessary, **rescuing persons** performing work inside the vessel. The system can also be used as a **lifting system for handling loads up to 340 kg** inside the vessel. This allows work inside the apparatus, such as replacing glass-lined turbines, to be carried out safely and quickly.

Features

- Standardized anchor point at the top bottom of glass-lined reactors according to DIN 28136 of the BE and CE designs from 1,600 l nominal volume upwards
- Possible for glass-lined vessels of other designs (installation space check is carried out by THALETEC)
- Can be integrated within the scope of new fabrication or reglassing
- Space requirement corresponds approximately to a DN 100 (4") vessel nozzle
- Use of the anchor point for fall protection, **personal rescue** and **for handling loads** inside the container of up to 340 kg.

Advantages

- Universal application as an anchor point, also for lifting loads inside and close to the reactor or tank
- Significantly shorter set-up time for work in the reactor or tank, as the personal rescue and lifting system can be quickly and safely attached to the equipment without tools
- Cost savings, as the anchor point does not have to be created first when required
- Safe anchor point, as designed and constructed in accordance with the requirements for anchor points
- No additional structural measures and corresponding static verifications required
- Simple, cost-effective and testable at any time

Cover photo: 3M™ DBI-SALA® Modular Davit Lifting System »HC« attached to a BE 6300 glass-lined stirred tank using THALETEC SafeBase.

THALETEC GmbH

Steinbachstraße 3
D - 06502 Thale

☎ + 49 (0) 3947 778-0
☎ + 49 (0) 3947 778-130

Hotline:

☎ + 49 (0) 3947 778-111
@ service@thaletec.com
🌐 www.thaletec.com

