

THALETEC

Glass-lined COLUMNS



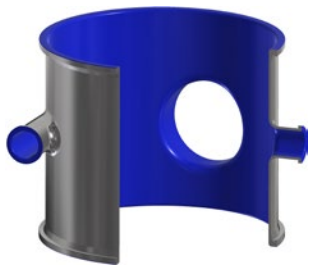
Columns are used in chemical industries in mass transfer applications. Depending on the process characteristics, they can be distinguished between

- distillation columns
- Strippers, Absorption or Washing columns
- Gas washers
- Rectification columns

For many years THALETEC designs and manufactures glass lined columns and internals to meet customer and process requirements. Big chemical companies and Engineering houses worldwide trust THALETEC's production expertise and technology.

This overview shows the many design options for your glass lined columns. We're looking forward to providing support that meet your specific requirements.

Tangential nozzles and lateral nozzles with large diameter for filling, emptying and inspecting.



Angular nozzles, Temperature probes with THALETEC QuickTip (see flyer K053 and K061)



Specification

THALETEC manufactures customized columns according to following technical specifications:

- Nominal diameter DN 250 (10") up to DN 2000 (78")
- Length of the segments up to 5500 mm (216")
- Temperature: -60°C up to 230°C
- Pressure: Full vacuum up to 6 bar
- Tolerances as per DIN 28007 f or m
- Supports as per customer requirements
- Design Codes: PED, ASME, Chinese Code, others

Our complete offering

- Entwicklung und Fertigung der Kolonne
- Finite Elemente Methode zur Bauteiloptimierung

Glass lined support rings, with and without dripping edge, including tolerance compensation (ShimFree-technology as per flyer K104)



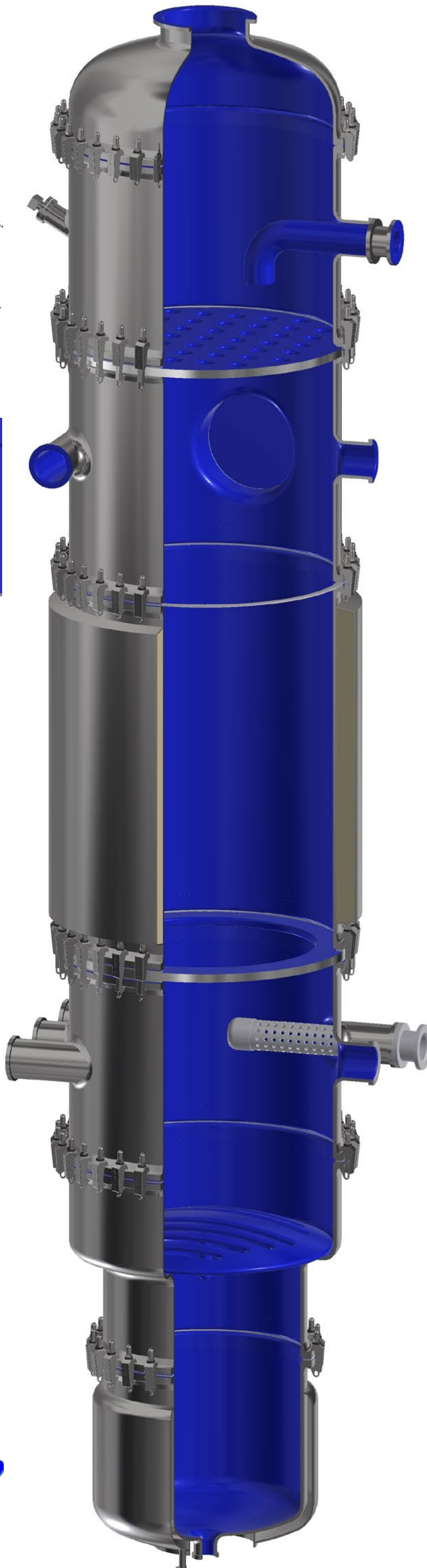
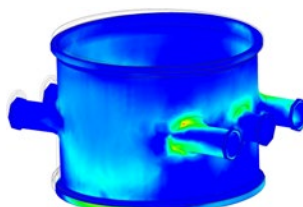
- Design and production of the column
- FEA for design optimization
- Earthquake-calculation
- Supply of internals made of glass lined steel or other materials
- Incoming inspection, glass thickness measurement, Spark-testing
- Supply of spare parts, also for columns made by other manufacturers
- Assembly of columns
- Supply of accessories such as gaskets, clamps, shimming material

Completely glass lined plates

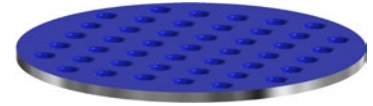


- Startup-support
- On site repair of glass damages (see flyer K093)
- Reglassing of column parts

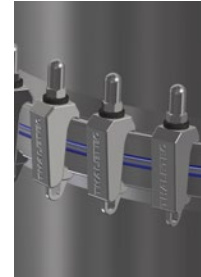
FEM analysis to optimize the design of the column segments



Bent glass lined feed pipes up to DN 300 (12")
(Other materials like Hastelloy or PTFE also available)



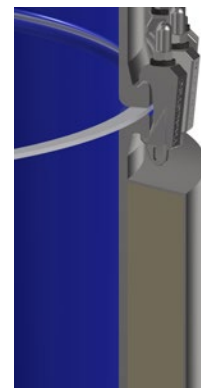
Glass lined support plates
(also available in Hastelloy, PFA- or PTFE-lined)



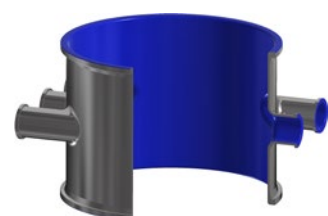
Clamps with SIMPLEX washers
(flyer K080) for reduced
tightening torques and
improved tightness



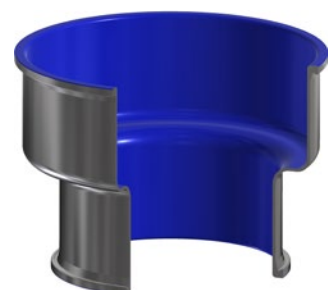
Flange gaskets with PTFE-envelopes and inserts made of AGR
Premium (flyer K025) or GRX Premium (flyer K099).
Shimming with THALETEC QuickShim (flyer K105).



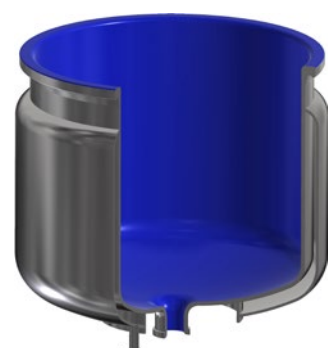
Insulation with stainless steel
cladding, Foamglass or mineral
fiber material



Radially
aligned nozzles



Column segments
with change in dia-
meter and support
faces in order to
minimize number of
flange connections



Segments with
heating/cooling
jackets

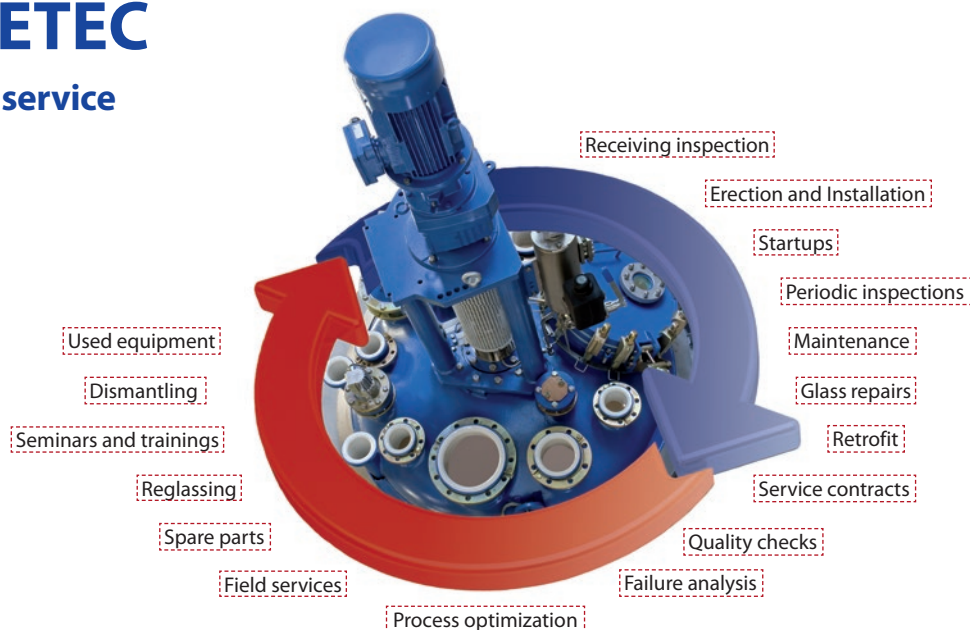
We would like to advise you regarding the advantages of glass-lined equipment like:

- Glass-lined reactors acc. to DIN 28136
- Glass-lined Pharma Reactors
- Components for pharmaceutical and high purity applications
- Mixing technology for pharmaceutical and chemical industry
- Reactors for Polymerization
- Storage Tanks and Receivers
- Columns
- Heat Exchangers
- Sensor technology
- Accessories

www.thaletec.com

THALETEC

all around service



THALETEC GmbH

Steinbachstraße 3
D - 06502 Thale

☎ + 49 (0) 3947 778-0
📠 + 49 (0) 3947 778-130

Hotline:

☎ + 49 (0) 3947 778-111
@ service@thaletec.com
🌐 www.thaletec.com

